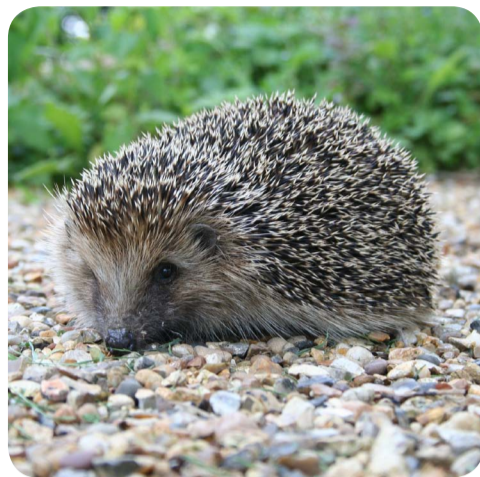
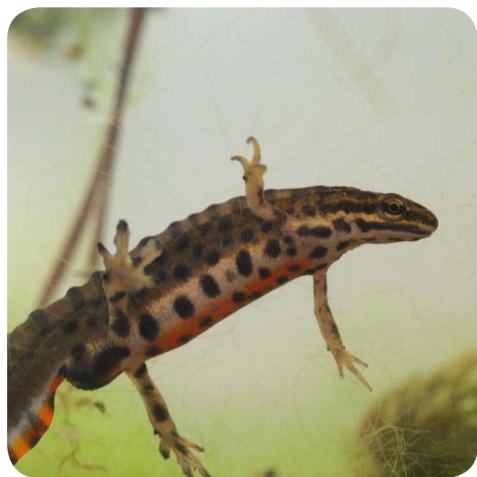


# Garden Wildlife Health



Garden Wildlife Health is a citizen science project monitoring the health of British garden wildlife. GWH investigates infectious diseases as well as toxicity, trauma and predation.

## How it works...

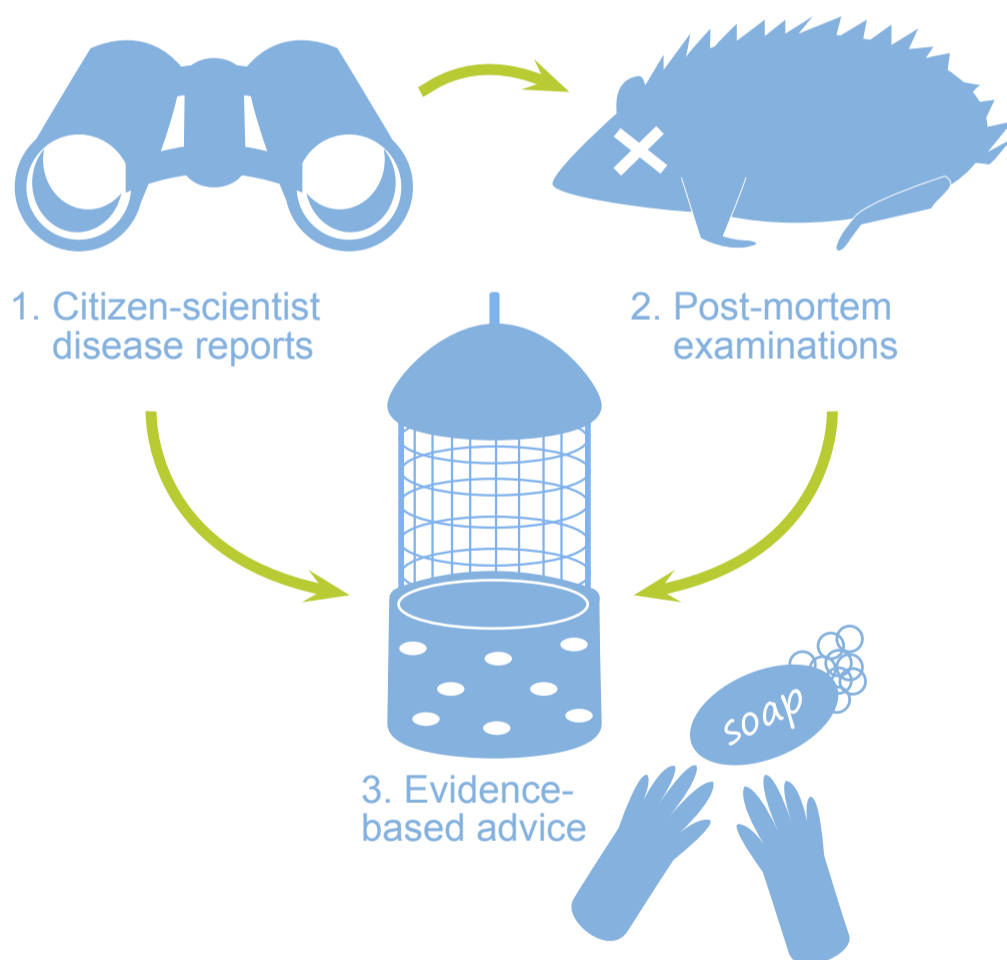
**1. Citizen-scientists** report sick or dead wildlife in their gardens. GWH focuses on amphibians, reptiles, garden birds and hedgehogs.

*Citizen Science is where volunteers work with scientists to answer real-world questions.*

**2. Post-mortem examinations** may be performed by a GWH vet when freshly dead carcasses are available. Specimens should not be handled directly and further guidance is available online.

Post-mortem examinations are required to determine the cause of death and reach a diagnosis. GWH vets use a variety of detailed tests in their research. These investigations also provide invaluable resources such as tissue banks that can be used in future studies.

**3. GWH reviews information on wildlife disease** in combination with population trends to determine if there is evidence of health conditions causing species declines. GWH uses this information to advise government and conservation policy. Science-based guidance on wildlife-friendly gardening practice is provided.



Report sick or dead garden wildlife at  
[gardenwildlifehealth.org](http://gardenwildlifehealth.org)

### Partners



### Funders



### Contact

[gardenwildlifehealth.org](http://gardenwildlifehealth.org)  
0207 449 6685  
[gwh@zsl.org](mailto:gwh@zsl.org)